



If you would like to share news or information with our readers, please send the unique stories, business

news organization events, and school news to us including your name and phone number in case more information is needed.

For news and information consideration, please send to News@scdaily.com or contact
John Robbins 832-280-5815
Jun Gai 281-498-4310

2018 Houston Barbecue Festival sends out happy smoke signals



Inside C2

Southern DAILY

Make Today Different

Southern Daily News is published by Southern News Group Daily

Publisher: Wea H. Lee
General Manager: Catherine Lee
Editor: John Robbins, Jun Gai
Business Manager : Jennifer Lopez
Address: 11122 Bellaire Blvd., Houston, TX 77072
E-mail: News@scdaily.com

Tuesday, April 17, 2018 | www.today-america.com | Southern News Group

Trump says Russia, China playing ‘currency devaluation game’

WASHINGTON (Reuters) - U.S. President Donald Trump accused Russia and China on Monday of devaluing their currencies while the United States raises interest rates.

“Russia and China are playing the Currency Devaluation game as the U.S. keeps raising interest rates. Not acceptable!” Trump said in a Twitter post.

Trump’s tweet referred to what he sees as unfair trading advantages: If a country’s currency is artificially low, its exports are more competitive. Higher U.S. interest rates would generally increase the value of the dollar, making U.S. exports more expensive.

Since Trump took office in January 2017, the dollar has weakened substantially against most currencies, including the Chinese yuan and, until the United States imposed sanctions on Russia in the last few weeks, the ruble.

Against the yuan, the dollar has fallen by 8.6 percent since Jan. 20, 2017, while it has appreciated 4.5 percent against the ruble. Until the United States announced sanctions on Russian oligarchs earlier this month, however, the dollar had weakened by nearly 4 percent against the Russian currency. That gain was entirely erased by a two-day drop of 8.4 percent in the ruble on April 9 and 10.

More widely, the U.S. dollar index, which measures the greenback’s value against a basket of major trading partner currencies, has declined by 11.2 percent since Trump became president. The U.S. Treasury, in a semiannual report on Friday, again refrained from naming any major trading partners as currency manipulators. The report came as the Trump administration pursues potential tariffs, negotiations and other restrictions to try to cut a massive trade deficit with China.

The report did not mention Trump’s recent threats to impose billions of dollars worth of tariffs on Chinese goods over Beijing’s intellectual property practices, or pending Treasury restrictions on Chinese investment in the United States. White House spokeswoman Sarah Sanders later told reporters aboard Air Force One on a trip by the president to Miami that China is on a U.S. Treasury Department watch list for being potentially labeled a currency manipulator.

U.S. President Donald Trump holds tax cut discussion in Hialeah, Florida



Miller Outdoor Theatre Celebrates its 95th Anniversary Season!

April scheduled performances

All performances are always free

Fun facts and frequently asked questions at the bottom



HOUSTON—It’s Miller Outdoor Theatre’s 95th Anniversary Season and there will be activities marking this special occasion throughout the year! Since 1923, Miller Outdoor Theatre in Hermann Park has been one of Houston’s most beloved cultural treasures, a gathering place for the community and the site of thousands of memorable free performances.

Miller is unique in the United States, offering an eight month season of professional, artistically-excellent and culturally diverse entertainment completely FREE of charge to the public. This is the largest “always free” program of its kind in the country and it attracts hundreds of thousands each season. From daytime programs especially for young children to family friendly evening performances of classical music, jazz, ethnic music and dance, ballet, Shakespeare, musical theatre, popular concert artists, films and more, this is

Houston’s best entertainment value.

HAYA Band: The Migration

April 20 at 8 p.m.

<http://milleroutdoortheatre.com/files/3127/HAYA>

Band performs Migration, a calm sampling of traditional and contemporary Chinese music.

Founded in 2006, HAYA Band is an award-winning world music collective representing a new era in folk music. The group has won many accolades, including from the China Music Awards (Best World Music Performance) and the Chinese Media Awards. Lead singer Dai-qing Tana was recently voted “The Most Beautiful Voice in China.”

MIGRATION is about searching for one’s own spiritual home, experiencing the beauty of life itself, and returning to a simplistic, survivalist lifestyle. HAYA Band’s “Migration” Concert employs

innovative musical language alongside classic traditional songs, fusing a variety of musical elements such as chants, the Mongolian horsehead fiddle, plucked string instruments, throat singing, and shaman drums. Their music is refined and captivating. Their shows have a distinct “ceremonious” feel. Migration provides us with a path for escape from this fast-paced modern world, a contemporary migration to another realm, one surrounded by the wonders of nature and life.

This is a ticketed event for the covered seating area. Free tickets are available (4 per person over age 16 while they last) at the Miller Outdoor Theatre box office the day of the performance between the hours of 10:30 a.m. -1p.m. If tickets remain at 1p.m., the box office will re-open one hour before show time to distribute the remaining tickets. As always, open seating on the hill. The show goes on rain or shine.

Presented by Miller Outdoor Theatre

All You Can Eat Japanese Seafood Buffet

Tokyo One

Westheimer Branch

Sushi & Sashimi

Sea food and Salad Bar

Fresh Oysters, Snow Crabs, Shrimps and Crawfish

Dessert Bar

Sushi Rolls

Lobsters
Season Special!
Live Fresh Only
時價 \$7.99

Sushi

歡迎來Party

713.785.8899

(To make a reservation)

2938 W Sam Houston Pkwy S

Houston, TX 77042

☛Lunch Buffet

Mon-Fri (For adults) \$14.95
11am-3:30pm (For Kids 3-10歲) \$7.95
Sat-Sun (For adults) \$29.95
11am-4:00pm (For Kids 7-10歲)\$14.95
(For Kids 3-6歲) \$8.95

Holiday Price May Vary!

☛Dinner Buffet

Mon-Sun (For adults) \$29.95
4pm-9:30pm (For Kids 7-10歲) \$14.95
(For Kids 3-6歲) \$8.95

☛Birthday (6人以上)
Birthday People 50% off
不能與其他Coupon合用 ID帶來

名門金宴

Regal Seafood

Fine Dining & Banquet

港式粵菜 多倫多風味

海鮮小炒 精美點心

週一至週五

名門自選和菜

送 老火例湯

Free Soup of The Day

二和菜 Dinner for two \$23.99

三和菜 Dinner for three \$33.99

四和菜 Dinner for four \$43.99

五和菜 Dinner for five \$53.99

六和菜 Dinner for six \$63.99

根據您的預算，為您量身定做菜單，暨氣派又實惠！

遊水海鮮直接從加州拿貨，空運到港，省去批發商環節，全德州最便宜！

稻香村集團美國總店：**Regal 名門金宴**

電話：281-494-8888

地址：12350 southwest Freeway, Stafford, TX77477

稻香村集團美國分店：**E-Tao 稻香村**

電話：713-965-0888

地址：5135 west alabama st, suite 7295, Houston, TX77056 (Galleria Mall二樓，Nordstrom和Macy's之間)

片皮鴨 \$29.99

E-Tao

R03_TOKYO ONE東京京餐館2467C_16

R03-REGAL 名門金宴_16

2018 Houston Barbecue Festival sends out happy smoke signals

By Greg Morago

A strong breeze whipped through the sixth annual Houston Barbecue Festival, but that only meant the air was full of wood smoke and that every corner of the event was touched by the aroma of smoked meat. Not a bad thing.

More than 2,000 people attended the festival held Sunday at the Humble Civic Center with both indoor and outdoor tents featuring barbecue from two dozen area pitmasters and barbecue joints.

The lines were long, naturally, for brisket from Killen's Barbecue in Pearland; for CorkScrew BBQ from Spring; Louie Mueller Barbecue from Taylor; and Truth Barbecue from Brenham. It was a chance for participating barbecue joints to promote their smoked-meat staples (ribs, brisket, sausage and turkey) while also showing off created impulses.

A few examples of the latter: Gatlin's BBQ's Cuban

sandwich and bao buns filled with char siu pork; Thai green curry boudin and Thai peanut butter pork belly burnt ends from Blood Bros. Barbecue; Pizzitola's slow-smoked cabbage with sausage and bacon as well as sage and garlic flavored turkey breast; El Burro & the Bull's smoked pork cochinita pibil on blue corn tostadas with smoked avocado gazpacho; The Pit Room's whole hog with braised collard greens and spicy brown mustard on grilled sourdough; and smoked shoulder clod on a bolillo bun with Asian slaw and spicy mayo from Pinkerton's Barbecue.

Desserts also proved to be impressive and popular with festival-goers this year. Feges BBQ created a PB&J cake that went fast; Tin Roof had cinnamon roll bread pudding; Spring Creek Barbecue's banana pudding put smiles on many faces; and Pinkerton's served up bread pudding with smoked cream cheese icing and wild blueberry reduction.

Pitmasters used the festival to create good will and extend brand loyalty within the growing barbecue landscape in Houston.



Pedestrian struck, killed by train north of downtown Houston

A pedestrian on train tracks north of downtown Houston was struck and killed by a train Monday afternoon, authorities said.

Houston police were called out to the Amtrak station in the 900 block of Washington Avenue shortly before 3:30 p.m. They discovered a pedestrian on the tracks had been struck and killed.

It is not immediately clear if an Amtrak train was involved. The tracks are operated by Union Pacific, according to Texas Department of Transportation records.

The rail line runs underneath the University of Houston Downtown less than a mile away from the Amtrak station.

No other information was available.



許氏用♥ 大家放♥

許氏參業集團 創辦人
許忠政 誠心推薦
Paul C. Hsu

許氏嚴選

自用養生珍藏 送禮體面尊貴

許氏珍珠參

精挑細選 珠圓玉潤

產自威州唯一華人自營參場
四十多年信譽全球知名品牌

精選珍珠參 (4oz)

精選珍珠參 (8oz)

精選珍珠參珍藏錦緞禮盒 (5oz) - 特價限量供應中 -

許氏德州經銷專賣店

Dallas	
達拉斯出國人員服務中心	972-235-2288
SzeChuan China Restaurant	214-521-6981
Mau Phuoc Duong	972-496-4372
Grand Prairie	
香港超級市場	972-988-8811
Plano	
達福出國人員服務中心	469-586-8195
陽光旅行社	972-758-9588

YiYiHerbs	972-666-8188
大華超級市場(99 Ranch)	972-943-8999
百佳超級市場	972-517-8858
Houston Bellaire	
五豐海味中藥行	713-271-3838
金荷中醫診所	713-772-2999
永盛圖書百貨公司	713-271-8186
仁安堂花旗參茸中藥行	713-270-4611
盧林中醫診所	713-774-5558

德信行	713-995-8530
中國出國人員服務中心	713-988-5200
德聖堂	713-988-5864
參茸城	917-365-1688
香港海味城	713-772-2889
燕窩城	713-776-2888
713-772-7888	
仁濟中醫針灸所	713-271-0488
聯發行L&P	713-995-9138

百佳超級市場	713-270-1658
惠康超級市場	713-270-7789
Hous香港超級市場	281-575-7886
百利草藥	281-988-8500
NHAN HOA HERBS	281-776-9888
Houston Area	
越華超級市場	832-298-9321
萬和堂	281-988-8338
家樂超級市場	713-818-2770

大華超級市場(99 Ranch)	713-932-8899
大華超級市場(99 Ranch)	281-980-6699
Austin	
天地人參茸行	512-467-8888
恆豐	512-719-3864
San Antonio	
亞洲市場	210-681-8688
College Station	
BCS Food Markets	979-695-6888



美國許氏參業集團 1-800-826-1577
www.hsuginseng.com



Editor's Choice Picturs



Attendees sign a photo of Evan Thomas, one of the players killed in the bus crash carrying the Humboldt Broncos Junior A hockey team



Adult film actress Stephanie Clifford, also known as Stormy Daniels, speaks to media along with lawyer Michael Avenatti outside federal court in Manhattan



Eva Longoria speaks on the Hollywood Walk of Fame in Los Angeles



U.S. President Donald Trump's personal lawyer Michael Cohen leaves federal court in Manhattan



Mexican billionaire Carlos Slim looks on during a news conference in Mexico City



Turkish gendarmes stand guard at the entrance of Aliaga Prison and Courthouse complex in Izmir



FILE PHOTO: Ortega, nanny accused of killing Lucia and Leo Krim, arrives for hearing at Manhattan Supreme Court in New York



INTERVIEW-UK campaigner eyes final push with 'gender-less' passports hearing



Saudi man takes photos of Iran-aligned Houthi drones in Khobar

The International Association of Business Communicators Houston announced today that it will grant this year's "Executive Communicator of the Year" award to Harris County Judge Ed Emmett, for serving as "the voice of calm and reason in times of crisis" during hurricanes Ike and Harvey. IABC Houston, whose more than 150 members include public relations and communication professionals from Fortune 500 companies, communications agencies, nonprofit organizations and government, will present Emmett with the award at a gala on June 14.

"Throughout the course of Hurricane Ike in September 2008 and then Hurricane Harvey last year, (Emmett) exemplified the commitment to serve as the voice of calm and reason in times of crisis," the IABC said in its news release. "Pledging to provide accurate, up-to-date information, Judge Emmett and his staff conducted regular news conferences and briefed local, national and international journalists from a broad range of newspaper, radio, Internet and television outlets."

Emmett said he was proud to accept the award on behalf of a large team of county officials, first responders and others who were part of a massive response to both disasters.



Harris County Judge Ed Emmett addressing online social media and email messages that had been circulating about Hurricane Harvey during the storm event.

"I greatly appreciate IABC Houston for honoring me with this award," said Emmett. "Emergency response presents numerous challenges, but none more important than communicating quickly and clearly to the public what is happening and how they can best protect themselves and their neighbors. This award rightly belongs to the hundreds of people who work so hard to protect the public in times of disaster." (Courtesy Joe Stinebaker /IABC)

Related

The Political Career of Harris County Judge Ed Emmett

International Association of Business Communicators Houston
Names Judge Emmett as "Executive Communicator of the Year"
In Recognition of His Leadership During Crisis

Compiled And Edited By John T. Robbins, Southern Daily Editor



Edward Martin Emmett, known as Ed Emmett (born August 14, 1949),[1] has been since 2007 the administrative county judge of Harris County, Texas. From 1979 to 1987, he was a Republican member of the Texas House of Representatives, first from District 78 from 1979 to 1983 and then newly numbered District 127 from 1983 until 1987.

After a twenty-year hiatus from politics, he was elected as county judge to head the five-member Harris County Commissioners Court, based in Houston. Harris is the largest county by population in Texas.

Background

Emmett graduated in 1967 from Bellaire High School. In 1971, he received a Bachelor of Arts degree in Economics from Rice University in Houston. In 1974, he earned his Master of Public Affairs degree from the University of Texas at Austin. Emmett and his wife, Gwendolyn O. Emmett, have four children.

Political life

In 1978 at the age of twenty-nine, Emmett was elected to the first of his four terms in the state House. That year Bill Clements was elected as the first Republican governor of Texas since Reconstruction, having narrowly defeated the Democrat John Luke Hill, a former attorney



Judge Emmett shown receiving the 2016 President's Award from the National Trust for Historic Preservation. (Photo/David Keith)

general and Texas Supreme Court justice. By the time Emmett left the House, Clements returned for his second non-consecutive term as governor when he waged a successful comeback against the man who had defeated him in 1982, then Attorney General Mark White. Since the late 20th century, conservative white voters have increasingly shifted from the Democratic Party into the Republican Party, supporting more candidates at the local and state as well as presidential level.

During his state legislative tenure, Emmett chaired the House Energy Committee and sat as well on the Transportation Committee. In 1989, U.S. President George Herbert Walker Bush nominated Emmett to serve on the Interstate Commerce Commission, an appointment that he held for

three years. In 1995, the remaining functions of the ICC were transferred to the Surface Transportation Board. Emmett was unanimously confirmed by the United States Senate.

Emmett was first appointed county judge by the commissioners court in 2007 to fill the nearly full four-year term left by the resignation of his predecessor, Robert Eckels, also a transportation planner and a former member of the state House. In his capacity as county judge, Emmett is also the director of the Harris County Office of Homeland Security and Emergency Management. He is the chairman of the Houston-Galveston Area Transportation Policy Council and the county Juvenile Board.



Judge Emmett receives the North Houston Association's 2009 North Star Award from former Harris County Judge and state Senator Jon Lindsay, the president of the North Houston Association.

In 2008, Emmett defeated fellow Republican Charles Bacarisse, the former Harris County district clerk, in the primary election to complete the last two years of the term that Eckels vacated. He went on to

defeat Democrat David Minckberg in the 2008 general election and won a full term in 2010 by defeating former Houston City Council member Gordon Quan. Emmett ran again in the general election held on November 4, 2014, when he defeated another Democrat, Ahmed Robert Hassan, a real estate and mortgage broker.

Early in the 2014 campaign, Emmett, who had no intraparty rival, donated \$90,000 from his own campaign funds to engineer-turned-lawyer Paul Simpson, who in the primary unseated Jared Woodfill, the 12-year chairman of the Harris County Republican Party. Woodfill carried the backing of former chairman Gary M. Pollard, State Senator Dan Patrick, the new lieutenant governor, and Paul Bettencourt, the former Harris County tax assessor-collector and Patrick's



Judge Emmett presents Houston Dynamo President and General Manager Oliver Luck with a Harris County Proclamation.

successor in the District 7 seat in the state Senate. Emmett, however, claims that Woodfill in 2012 took personal credit for the establishment of "victory centers" when the sites were the work of Emmett and the state Republican party. Simpson supporters claimed that Woodfill had been lackluster in campaign fundraising and had accented "social issues" as chairman, including a lawsuit against the mayor of Houston, Annise Parker, regarding benefits for same-sex couples working for the city. Emmett has been awarded numerous awards in his career, including being named Transportation Person of the Year by Transportation Clubs International in 2005, receiving the Presidential "Call to Service" Award from president George W. Bush in 2008, and receiving the 2009 Distinguished Public Service Award from the LBJ School of Public Affairs at the University of Texas. (Courtesy Wikipedia, the free encyclopedia)

Houston Yellow Page is published by Southern News Group

*Walk in the History
Plan for the Future*

**2018
Houston
Yellow Page
Full Release Now**

Feel free to get a free copy

肯定得大律師

肯文輝 • 沙倫士 律師
KENWING SAMSON & SHARON SI
14000 Southwest Freeway, Suite 110
Houston, TX 77040
Tel: (281) 261-8100 Fax: (281) 261-9177
精通粵語、國語、英語

2018 休士頓黃頁

HOUSTON CHINESE YELLOW PAGES

休士頓 Houston 糖城 Sugar Land 斯庫爾斯 Katy 明倫城 Clearlake 奧斯汀 Austin 聖安東尼奧 San Antonio

蘇力 & 鄺麗 律師事務所

SOLIS & YAN P.C.

電話: (713) 779-4416

辦公時間: 週一至週五 9:00AM-5:00PM
週六 10:00AM-4:00PM
地址: 9188E Bellaire Blvd., Houston, TX 77036 (惠康超市廣場內)



SOUTHERN NEWS GROUP

T 281-498-4310
F 281-498-2728

ad@scdaily.com
www.today-america.com

11122 Bellaire Blvd
Houston, TX 77072

Health officials say chopped romaine lettuce from the Yuma, Arizona growing region is the likely source of the current E. coli outbreak that has now sickened people in 11 states, and they’re warning consumers across the country to avoid eating lettuce that may have been contaminated.

According to the latest update from the Centers for Disease Control and Prevention, so far there have been 35 cases of illness, 22 of which led to hospitalizations. Three people have developed a severe complication -- a type of kidney failure called hemolytic uremic syndrome (HUS) which can be life-threatening. The outbreak involves a particularly dangerous strain of the bacteria known as Shiga toxin-producing E. coli O157:H7.

“Information collected to date indicates that chopped romaine lettuce from the Yuma, Arizona growing region could be contaminated with E. coli O157:H7 and could make people sick,” the CDC said in a statement.

No common grower, supplier, or distributor has been identified yet. State and local public health investigators continue interviewing ill people to determine what they ate and how they might have been exposed. So far, cases of illness from this outbreak have been reported in Connecticut, Idaho, Illinois, Michigan, Missouri, New Jersey, New York, Ohio, Pennsylvania, Virginia, and Washington.



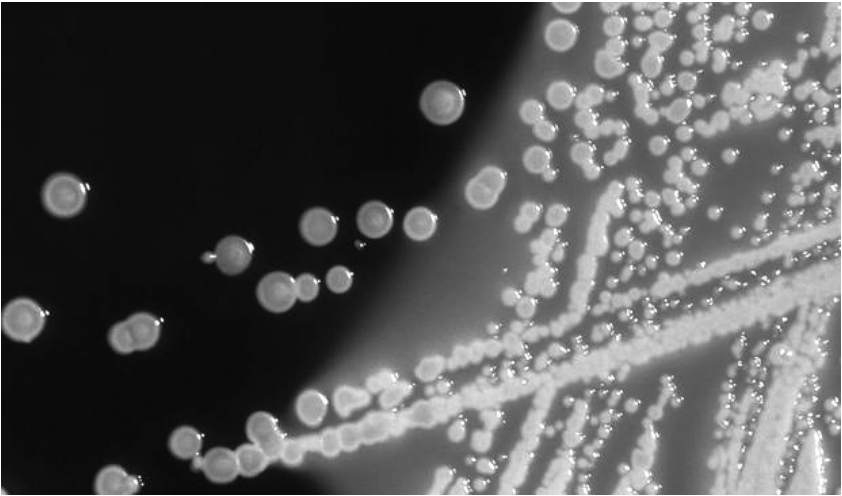
Bundled Romaine lettuce (left photo) and when chopped for bagged salads.

Romaine Lettuce Warning

To keep yourself and your family safe, the CDC recommends avoiding any romaine lettuce products that could be contaminated. It issued a wide-ranging caution, not limited to any specific brand or retailer:

CDC Says Romaine Lettuce Likely Source Of E. Coli Outbreak

Compiled And Edited By John T. Robbins, Southern Daily Editor



Colonies of E. coli bacteria seen in a microscopic image. (Photo/ CDC Via Reuters)

“Consumers anywhere in the United States who have store-bought chopped romaine lettuce at home, including salads and salad mixes containing chopped romaine lettuce, should not eat it and should throw it away, even if some of it was eaten and no one has gotten sick. If you do not know if the lettuce is romaine, do not eat it and throw it away.”

In addition, before buying romaine lettuce at a grocery store or ordering it at a restaurant, check to see if it came from the Yuma, Arizona growing region. If you cannot confirm it isn’t from Yuma, do not purchase it.

The CDC urged restaurants and retailers to ask their suppliers about the source of their chopped romaine lettuce, and not to sell any chopped romaine lettuce, including salads and salad mixes containing it, from the Yuma, Arizona growing region. Officials note this outbreak is not related to another recent multi-state outbreak also linked to leafy greens, which involved

a different DNA fingerprint of E. coli O157:H7 bacteria.



Romaine Lettuce

Symptoms of E. coli

Symptoms of an E. coli infection include diarrhea, which can be bloody, severe stomach cramps and vomiting. It typically takes an average of three to four days to get sick after eating contaminated food, and the illness usually clears up within a week. However, sometimes it can linger longer and serious complications can devel-

op. Signs of hemolytic uremic syndrome (HUS) include fever, abdominal pain, pale skin tone, fatigue and irritability, unexplained bruises or bleeding from the nose and mouth, and decreased urination. These complications are more common in young children under 5, older adults, and people with weakened immune systems. Anyone experiencing these symptoms should seek medical care immediately. (Courtesy <https://www.cbsnews.com/news/>)

Related

Health Advisory From The Centers For Disease Control

Multistate Outbreak of E. coli O157:H7 Infections Linked to Chopped Romaine Lettuce



Highlights

Information collected to date indicates that chopped romaine lettuce from the Yuma, Arizona growing region could be contaminated with E. coli O157:H7 and could make people sick.

At this time, no common grower, supplier, distributor, or brand has been identified.

Advice to Consumers:

Consumers anywhere in the United States who have store-bought chopped romaine lettuce at home, including salads and salad mixes containing chopped romaine lettuce, should not eat it and should throw it away, even if some of it was eaten and no one has gotten sick. If you do not know if the lettuce is romaine, do not eat it and throw it

away. Before purchasing romaine lettuce at a grocery store or eating it at a restaurant, consumers should confirm with the store or restaurant that it is not chopped romaine lettuce from the Yuma, Arizona growing region. If you cannot confirm the source of the romaine lettuce, do not buy it or eat it.

Advice to Restaurants and Retailers:

Restaurants and retailers should not serve or sell any chopped romaine lettuce, including salads and salad mixes containing chopped romaine lettuce, from the Yuma, Arizona growing region.

Restaurants and retailers should ask their suppliers about the source of their chopped romaine lettuce.



Table showing the number of ill people arranged by state of residence

State	No. People
Connecticut	2
Idaho	8
Illinois	1
Michigan	1
Missouri	1
New Jersey	7
New York	2
Ohio	2
Pennsylvania	9
Virginia	1
Washington	1
Total	35

CDC, public health and regulatory officials in several states, and the U.S. Food and Drug Administration are investigating a multistate outbreak of Shiga toxin-producing Escherichia coli O157:H7 (E. coli O157:H7) infections.

Thirty-five people infected with the outbreak strain of E. coli O157:H7 have been reported from 11 states.

Twenty-two people have been hospitalized, including three people who have developed a type of kidney failure called hemolytic uremic syndrome.

No deaths have been reported.

This investigation is ongoing, and CDC will provide updates when more information is available. (Courtesy <https://www.cdc.gov/ecoli/2018>)

15.3

KVVU

STV

美南國際電視15.3頻道

- 免費高清頻道
- 免費數位頻道
- 免費中英文頻道



大瓷商

電影藏密

DEEP DARK SECRETS OF

人到四十

男人要說謊?

女人要流淚?

男左女右

MEN VS WOMEN

海峽兩岸

跟蹤海峽熱點 反映兩岸民意

明星加油站

Preserve Health

Southern Television 15.3								2018年4月份 電視頻道節目表		4/16/2018 - 4/22/2018	
美東時間	MON.	TUE.	WED.	THU.	FRI.	SAT.	SUN.				
	16	17	18	19	20	21	22				
00:00-00:30	中國文藝 (重播)	美南新聞 / 台灣新聞 / 國際新聞 / 大陸新聞					地理・中國 (重播)				
00:30-01:00							明星加油站(重播)				
01:00-01:30						少年中國 (重播)	味道(重播)				
01:30-02:00	經典電影(重播)	動物傳奇(重播) (English)	Story China 故事在中國(重播)	防務新觀察 (重播)	中國大舞臺 (重播)						
02:00-02:30		中國功夫(首播)									
02:30-03:00		今日關注(重播)									
03:00-03:30		地理・中國 (重播)	中國功夫 (重播)			經典電影(重播)					
03:30-04:00	English 900 (首播)					司馬白話(重播)					
04:00-04:30	特別呈現 (重播)	電視劇《人到四十》 (重播) (English Subtitles)					武林風 (重播)				
04:30-05:00	空姐新發現(重播)										
05:00-05:30	Story China 故事在中國(重播)	電視劇《杜拉拉升職記》 (重播) (English Subtitles)					中國大舞臺 (重播)				
05:30-06:00											
06:00-06:30	國際新聞 / 大陸新聞 / 台灣新聞	美南新聞 / 台灣新聞 / 國際新聞 / 大陸新聞					國際新聞 / 大陸新聞 / 台灣新聞				
06:30-07:00							健身舞起來 (重播)				
07:00-07:30	防務新觀察 (重播)	海峽兩岸(重播)									
07:30-08:00											
08:00-08:30	謝謝我的家 (重播)	健康之路 (重播)				檔案 (首播)	經典電影(首播)				
08:30-09:00					男左女右 (首播)						
09:00-09:30		Story China 故事在中國(首播)	快樂童年(重播)	中國大舞臺 (首播)		地理・中國 (首播)					
09:30-10:00	文明之旅 (重播)	粵語天地 (重播)	明星加油站(首播)	洋言洋語(重播)	空姐新發現(首播)	電影藏密 (首播)					
10:00-10:30	今日關注(首播)										
10:30-11:00	國際新聞 / 大陸新聞 / 台灣新聞	美南新聞 / 台灣新聞 / 國際新聞 / 大陸新聞					國際新聞 / 大陸新聞 / 台灣新聞				
11:00-11:30											
11:30-12:00	空姐新發現(重播)						謝謝我的家 (首播)				
12:00-12:30	台灣心動線 (重播)	美食風味 (重播)	光鹽健康園地 (重播)	城市一對一 (重播)	休士頓論壇(重播)	Howdy Philippines! (首播)	動物傳奇(重播) (English)				
12:30-13:00		生活 (重播)					特別呈現 (首播)				
13:00-13:30	電視劇《人到四十》 (首播) (English Subtitles)										
13:30-14:00											
14:00-14:30	卡通片《鞠萍姐姐講故事》 (首播)					洋言洋語(首播)	粵語天地(首播)				
14:30-15:00						地理・中國 (重播)	中華文化遺產 (首播)				
15:00-15:30	特別呈現 (重播)	綠水青山看中國 (重播)	武林風 (重播)	中國民歌大會第一季 (重播)	武林風 (首播)	中國民歌大會第一季 (首播)	真情部落格 (首播)				
15:30-16:00							司馬白話 (首播)				
16:00-16:30	中國文藝 (重播)	中華文化遺產 (重播)	地理・中國 (重播)	幸福來敲門 (首播1)	幸福來敲門 (首播2)						
16:30-17:00	美南新聞 / 台灣新聞 / 國際新聞 / 大陸新聞					國際新聞 / 大陸新聞 / 台灣新聞	Howdy Philippines! (重播)				
17:00-17:30						健身舞起來 (首					
17:30-18:00	美食風味	光鹽健康園地	城市一對一	休士頓論壇	台灣心動線	生活 (首播)	防務新觀察 (首播)				
18:00-18:30	生活 (重播)					快樂童年(首播)	綠水青山看中國 (首播)				
18:30-19:00	電視劇《杜拉拉升職記》 (首播) (English Subtitles)					中國文藝 (首播)					
19:00-19:30	海峽兩岸(首播)										
19:30-20:00					司馬白話(重播)	味道(首播)	謝謝我的家 (重播)				
20:00-20:30	健康之路 (首播)			真情部落格 (重播)	明星加油站 (重播)	檔案 (重播)	文明之旅 (首播)				
20:30-21:00	美南新聞 / 台灣新聞 / 國際新聞 / 大陸新聞										
21:00-21:30						幸福來敲門 (重播1)	幸福來敲門 (重播2)				
21:30-22:00											
22:00-22:30											
22:30-23:00											
23:00-23:30											
23:30-00:00											

新節目即將推出，詳情請洽本台。

Updated: 4/12/2018