

<ul style="list-style-type: none"> • Take full ownership of customer issues & show a strong commitment to going above & beyond • Manages logistics operations to ensure efficient and accurate delivery of shipments • Positive Attitude. Dependable. Takes initiative. • Excellent communication skills (spoken & written). • Bilingual (Mandarin & English) is preferable. <p>Please email your resume to lwang@telcointercon.com Attn: HR</p>	<p>committed to excellence that will go the extra mile for our customers.</p> <p>Income potential up to 75,000 per year plus bonuses.</p> <p>Health benefits, 401k benefits, 5 day work week.</p> <p>Tel: 281-341-2277</p> <p>Email: Ffontenot@teammgillman.com</p> <p>24875 Southwest Freeway, Rosenberg, TX 77471</p> <p>www.HondaFortbend.com</p>	<table border="1"> <tr> <td data-bbox="1122 3327 1263 3351" rowspan="2">Houston</td> <td data-bbox="1263 3327 1596 3334">Passenger Inside Sales</td> </tr> <tr> <td data-bbox="1263 3334 1596 3351">Cargo Reservation</td> </tr> </table> <p>Bilingual English/Chinese a plus, Good communication & customer services skills, Computer proficiency, Self-motivated.</p> <p>Benefits include zero employee contribution for group health & life insurance, free/discount air tickets, and matching 401(k). EOE-M/F/D/V</p>	Houston	Passenger Inside Sales	Cargo Reservation
Houston	Passenger Inside Sales				
	Cargo Reservation				



If you would like to share news or information with our readers, please send the unique stories, business

news organization events, and school news to us including your name and phone number in case more information is needed.

For news and information consideration, please send to News@scdaily.com or contact
John Robbins 281-965-6390
Jun Gai 281-498-4310

Publisher: Wea H. Lee
President: Catherine Lee
Editor: John Robbins

Address: 11122 Bellaire Blvd., Houston, TX 77072
E-mail: News@scdaily.com



Inside C2

Southern DAILY

Make Today Different

Southern Daily News is published by Southern News Group Daily

Tuesday, November 30 2021|

WHO flags Omicron risk, curbs tighten worldwide, Biden urges vaccination

GENEVA/JOHANNESBURG, Nov 29 (Reuters) - The World Health Organization (WHO) said on Monday the Omicron coronavirus variant carried a very high risk of infection surges as more countries closed borders, casting a shadow over economic recovery from the two-year pandemic. Big airlines acted swiftly to protect their hubs by curbing passenger travel from southern Africa, fearing that a spread of the new variant would trigger restrictions from other destinations beyond the immediately affected regions, industry sources said. read more

But shares in carriers bounced back with the rest of the market on Monday after Friday's rout as hopes grew that the variant might prove to be milder than initially feared. read more

President Joe Biden urged Americans not to panic and said the United States was working with pharmaceutical companies to make contingency plans if new vaccines were needed. read more

Biden said the country would not go back to lockdowns this winter, but urged people to get vaccinated, get their boosters and wear masks.

"This variant is a cause for concern, not a cause for panic," Biden said in remarks at the White House following a meeting with his COVID-19 team.

"We're going to fight and beat this new variant."

The WHO advised its 194 member nations that any surge in infections could have severe consequences, but said no deaths had yet been linked to the new variant.

"Omicron has an unprecedented number of spike mutations, some of which are concerning for their potential impact on the trajectory of the pandemic," the WHO said.

"The overall global risk related to the new variant of concern Omicron is assessed as very high."

Further research was needed to understand Omicron's potential to escape protection against immunity induced by vaccines and previous infections, it added.

An infectious disease expert from South Africa, where scientists first identified Omicron, said it was too early to say whether symptoms were more severe than previous variants, but it did appear to be more transmissible.



Professor Salim Abdool Karim also said existing vaccines were probably effective at stopping Omicron from causing severe illness. Scientists have said it could take weeks to understand the severity of Omicron.

South African cases were likely to exceed 10,000 a day this week, rocketing up from barely 300 a day two weeks ago, Karim added.

But South African President Cyril Ramaphosa denounced "unjustified and unscientific" travel bans that damage tourism-reliant economies. His country has said it is being punished for its scientific ability to detect new variants.

Travellers in personal protective equipment load luggage into a taxi outside the international terminal at Sydney Airport, as countries react to the new coronavirus Omicron variant amid the coronavirus disease (COVID-19) pandemic, in Sydney, Australia, November 29, 2021. REUTERS/Loren Elliott

A man stands in front of a monitor showing flight schedules at an arrival hall of Haneda airport's international terminal, amid the coronavirus disease (COVID-19) outbreak, in Tokyo, Japan, November 29, 2021. REUTERS/Kim Kyung-Hoon

Health ministers from the Group of Seven bloc of wealthy nations praised South Africa for its "exemplary work" in detecting the variant and alerting others, a sentiment

echoed by Biden.

JITTERY MARKETS

Fears the new variant might be resistant to vaccines helped wipe roughly \$2 trillion off global stock markets on Friday but markets settled down again on Monday, even after Japan said it would close its borders to foreigners.

U.S. Commerce Secretary Gina Raimondo said on Monday it was too soon to tell if Omicron will have any impact on global supply chains. read more

The prospect of a fast-spreading variant has raised fears of a return of the sort of restrictions that shut down a swathe of industries in 2020.

"This is new," Nissan Motor Co's (7201.T) U.S. spokeswoman, Lloryn love-Carter, said. "We're monitoring of course, but we still have a lot of pretty strict COVID protocols in place."

Travellers stranded at Johannesburg international airport said they felt helpless as flights from South Africa were cancelled. "We don't know what to do, we

are just waiting here," said Ntabiseng Kabeli, from Lesotho.

Portugal found 13 cases of the variant at a Lisbon football club. Spain, Sweden, Scotland and Austria also reported their first cases. read more

In Israel, a ban on arrivals by foreigners took effect overnight. read more

U.N. Secretary-General Antonio Guterres expressed concern that restrictions would isolate southern African countries.

"The people of Africa cannot be blamed for the immorally low level of vaccinations available in Africa – and they should not be penalized for identifying and sharing crucial science and health information with the world," he said.

Guterres has long warned about the dangers of vaccine inequality around the world and the risk that low immunisation rates are a breeding ground for variants.

More than 261 million people in over 210 countries have been reported to be infected by the coronavirus since the first cases were identified in China in December 2019 and 5,456,515 have died, according to a Reuters tally.

敬請關注我們的新媒體帳號
Follow us on social media



Southern News
美南新聞



美南微信
公眾號



今日頭條
美國美南網



抖音
美國美南網



西瓜视频
美國美南網



Facebook Page
Southern News
美南新聞



Tik Tok ID:
Southern News Group



Instagram ID:
Southern News

WEA LEE'S GLOBAL NOTES

11/29/2021

We Welcome More People To Become Texans



Wea H. Lee
Wealee@scdaily.com

Chairman of International District Houston Texas

Publisher Southern Daily Wea H. Lee

Southern News Group Chairman / CEO
Chairman of International Trade & Culture Center
Republic of Guiana Honorary consul at Houston Texas



The New York Times had an article last week saying that the trauma of the past few years has rearranged all of our lives. Many Americans now have new needs, new desires, new possibilities and new priorities that include looking for bigger homes, second homes or any homes at all.

The New York Times gathered data from thousands of towns

and cities across more than 30 matrices such as school quality, crime rates and affordability. After they looked at the data they found out why many people are moving to Texas.

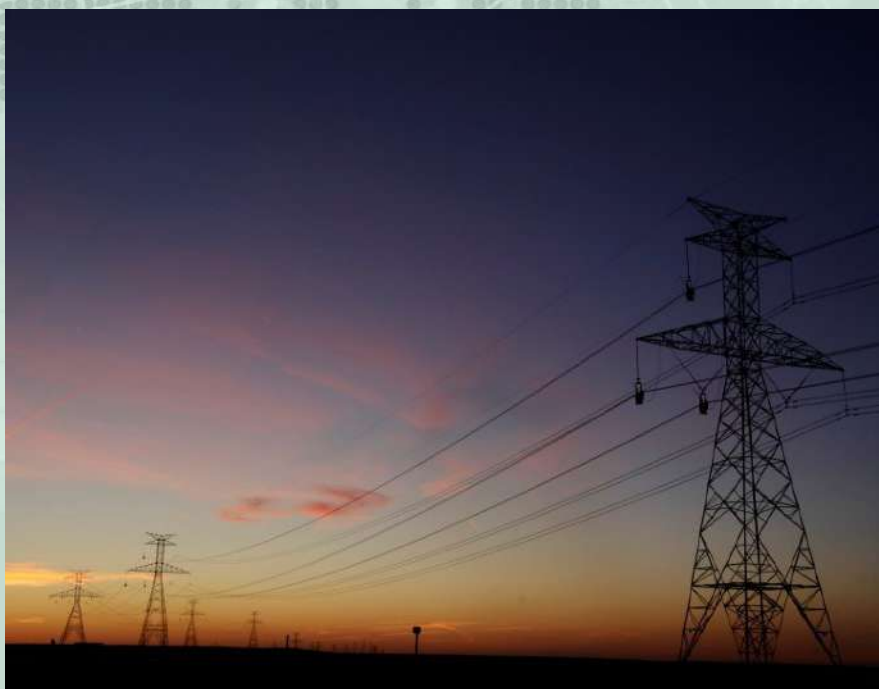
Over the last more than one hundred years, California has become the most prosperous "state-of-the-art" U. S. location, turning the "Golden State" into a global capital.

When people are looking for reasonable housing at a good price, good schools and a lower crime rate they found out that in Texas there are many cities that are suitable for their needs.

We are here to welcome more people to move to our state and become Texans.

When we first moved to Texas many years ago, people were very surprised when we gave up San Francisco in the Golden State to

come all the way to Texas. We spent all our energy and young adult life in Texas. Here is now our home. We are so happy we made the right decision, but for many of you, it is never too late.



Southern DAILY Make Today Different

Editor's Choice



An explosion caused by a police munition is seen while supporters of U.S. President Donald Trump rally to contest the certification of the 2020 U.S. presidential election, at the U.S. Capitol Building in Washington, January 6, 2021. REUTERS/Leah Millis



Adrian James, 2, who tested positive for the coronavirus, breathes with the help of a ventilator at SSM Health Cardinal Glennon Children's Hospital in St. Louis, Missouri, October 5, 2021. REUTERS/Callaghan O'Hare



A man is doused by a water cannon during clashes as people gather at the Bois de la Cambre/Ter Kamerenbos park for a party called "La Boum 2" in defiance of Belgium's coronavirus social distancing measures and restrictions, in Brussels, Belgium, May 1, 2021. REUTERS/Yves Herman



Lava is seen through the window of a kitchen from El Paso following the eruption of a volcano on the Canary Island of La Palma, Spain, September 28, 2021. REUTERS/Jon Nazca



A Naga Sadhu, or Hindu holy man wears a mask before the procession for taking a dip in the Ganges river during Shahi Snan at "Kumbh Mela", or the Pitcher Festival, in Haridwar, India, April 12, 2021. REUTERS/Danish Siddiqui



Haitian fire fighters recover the body of a three-year-old boy from under the rubble of a hotel destroyed in a 7.2 magnitude quake, in Les Cayes, Haiti, August 16, 2021. REUTERS/Ricardo Arduengo

Could Make Vaccines 40% Less Effective

Scientists Worldwide Sound The Alarm Over New ‘Worst-Ever’ Super-Mutant COVID Variant



BOTSWANA



Name: B.1.1.529

Cases? Around 100 detected

Key mutations:

K417N can escape antibodies

E484A can escape antibodies

N440K can escape antibodies

N501Y speeds up spread

More spike mutations than any other strain

Key Points

- *The B.1.1.529 variant has a ‘very unusual constellation’ of mutations and may be more resistant to the vaccine*
- *There are currently 77 confirmed cases in South Africa, four in Botswana, one in Hong Kong and one in Israel*
- *However, the real numbers are likely much higher as health authorities establish the full scale of the spread*
- *Britain, Israel, Singapore, Germany and Ital are among increasing countries to block flights from South Africa*
- *There are no direct flights to US from any of the countries except South Africa. Early Friday morning, the CDC still listed South Africa as ‘Level 1: Low Level of COVID-19’ on the country’s travel advice page*

Compiled And Edited By John T. Robbins, Southern Daily Editor

Scientists are increasingly alarmed over a new COVID-19 variant originating in Southern Africa, which on Thursday and Friday forced countries including the U.K., Israel, Italy and Germany to effectively stop travel from the region, but passengers are continuing to arrive in the U.S. Flight restrictions from South Africa to the US were lifted two weeks ago, along with restrictions on around 30 other countries. As of 5:00 a.m. on Friday, the CDC listed South Africa as ‘Level 1: Low Level of COVID-19’. The variant, B.1.1.529, is believed to have emerged in Botswana - from where there are no direct flights to the U.S. - and is also being found in neighboring South Africa. Hong Kong reported a case after a passenger who had recently traveled from South Africa was found to be infected with the variant, and then infected another person while in the same hotel, quarantining. Israel has also identified a case ‘in a person who returned from Malawi,’ with ‘two more cases of people returning from abroad’ placed in quarantine, the country’s health ministry said Friday. The variant – now named Omicron -- by the World Health Organization has caused an ‘exponential’ rise in infections in South Africa. Dr. Eric Feigl-Ding, an epidemiologist and senior fellow at the Federation of American Scientists, said initial data from the variant was worrying and border restrictions should be imposed. ‘Looks like vaccine evasion could be real with this variant,’ he tweeted, pointing out that the two patients in Hong Kong who had the variant were both doubled-jabbed with the Pfizer vaccine.

other person while in the same hotel, quarantining. Israel has also identified a case ‘in a person who returned from Malawi,’ with ‘two more cases of people returning from abroad’ placed in quarantine, the country’s health ministry said Friday. The variant – now named Omicron -- by the World Health Organization has caused an ‘exponential’ rise in infections in South Africa. Dr. Eric Feigl-Ding, an epidemiologist and senior fellow at the Federation of American Scientists, said initial data from the variant was worrying and border restrictions should be imposed. ‘Looks like vaccine evasion could be real with this variant,’ he tweeted, pointing out that the two patients in Hong Kong who had the variant were both doubled-jabbed with the Pfizer vaccine.

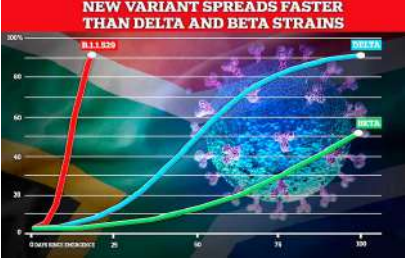


One of the two had recently been in Southern Africa. That person then passed it on to a second person, quarantining in the same hotel. ‘It’s very airborne,’ Feigl-Ding said. ‘The hotel guests were in different room across the hallway from each other. Environmental samples found the virus in 25 of 87 swabs across both rooms.’ He added: ‘I think border and travel restrictions make sense. Especially since Hong Kong only caught the case because of a mandatory hotel quarantine. Which countries in the west still have that??? Almost none.’

Botswana has four confirmed cases, South Africa 77 - with the real figure likely in the hundreds - and Hong Kong has two, meaning 83 cases of the variant are confirmed so far. But South African scientists tried to backpedal today saying it was ‘likely’ that vaccines still offered ‘high levels of protection’ against hospitalisations and deaths from the variant. Germany, Italy, the Czech Republic and the Netherlands joined Britain, Israel and Singapore in suspending travel from South Africa today and, in a sign of growing alarm, the European Union is also proposing prohibiting travel from the country and its neighbors.

As of 5:00 a.m. EST, the CDC website’s travel advice page for South Africa had the country listed as ‘Level 1: Low Level of COVID-19’, with flights to the US permitted from the African country since November 8. The levels range from Level unknown, Level 1: Low, Level 2: Moderate, Level 3: High and Level 4: Very High.

The CDC page asks anyone travelling to and from South Africa to be fully vaccinated, or for those who are not to be tested for Covid. It also recommends travellers



The CDC page asks anyone travelling to and from South Africa to be fully vaccinated, or for those who are not to be tested for Covid. It also recommends travellers

follow measures in-place in South Africa, including wearing a mask and social distancing.

South Africa’s infection rate spiked 93 per cent in a day yesterday amid fears the strain is driving the surge. Local scientists say it has likely spread to all the country’s nine provinces, but there is yet to be a surge in hospitalisations in epicentre Johannesburg. Travellers from South Africa have been allowed entry into the US since November 8, when restrictions barring entry to people from more than 30 countries - implemented at the start of the pandemic - were partially lifted.

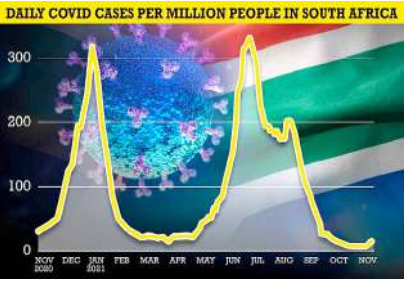
The new rules, which came 19 months after the travel ban was implemented, require international visitors to show both proof of vaccination and a negative Covid test.

‘There’s a lot we don’t understand about this variant,’ said Richard Lessells, an infectious disease physician at the University of KwaZulu-Natal in Durban, South Africa, at a press briefing organized by South Africa’s health department on Thursday. ‘The mutation profile gives us concern, but now we need to do the work to understand the significance of this variant and what it means for the response to the pandemic.’

U.S. stock futures dropped in overnight trading on Thursday as concerns about the variant spread.

Futures for the Dow Jones Industrial Average fell more than 400 points, while those for the S&P 500 and the Nasdaq 100 were both in negative territory.

On Thursday Britain’s health secretary, Sajid Javid sounded the alarm over what one senior scientific advisor in the UK termed the ‘worst-ever’ super-mutant COVID variant.



He said it could make vaccines at least 40 per cent less effective, and as a result he said they had banned flights from South Africa and five other regional countries. Experts explained earlier how the B.1.1.529 variant has more than 30 mutations – the most ever recorded in a variant and twice as many as Delta – that suggest it could be more jab-resistant and transmissible than any version before it.

In response, Javid announced that flights from South Africa, Namibia, Lesotho, Botswana, Eswatini and Zimbabwe will be suspended from midday Friday and all six countries will be added to the red list. South Africa blasted Britain’s travel ban as rushed.

Foreign minister Naledi Pandor said: ‘Our immediate concern is the damage that this decision will cause to both the tourism industries and businesses of both countries.’ A spokesman for the Government said: ‘Imposing bans on travellers from countries where a new variant is reported has not yielded a meaningful outcome.’

Israel was the first country to follow suit, also red-listing the six nations, with Singapore, Germany, Italy the Czech Republic and the Netherlands also banning flights from South Africa. A statement from European Commission chief Ursula von der Leyen said that the EU aims to halt air travel from the region due to concerns over the possible dangers posed by the variant.

Germany’s new travel restrictions, starting Friday night, will affect South Africa and ‘probably neighbouring nations’, Spahn said, with only German nationals allowed entry. They must quarantine for 14 days upon arrival even if vaccinated. In Britain they must quarantine for 11 days in Government hotels for about £2,800.



‘The last thing we need now is an introduced new variant that causes even more problems,’ Spahn said, with Germany in the grip of a ferocious fourth wave of the pandemic.

In Rome, the government on Friday announced it was banning entry to those who have been in South Africa, Lesotho, Botswana, Zimbabwe, Mozambique, Namibia or Eswatini in the past fortnight. Health Minister Roberto Speranza said scientists were studying the new B.1.1.529 variant, ‘and in the meantime, we will follow the path of maximum caution’. Asian countries are also preparing to tighten curbs.

(Article continues below)

(Article continues from above)

Scientists Worldwide Sound The Alarm Over New ‘Worst-Ever’ Super-Mutant COVID Variant

Compiled And Edited By John T. Robbins, Southern Daily Editor

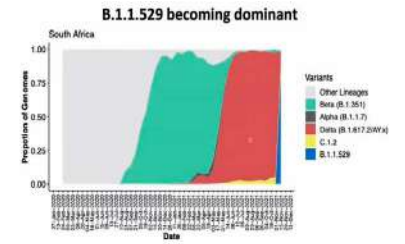
No cases have been detected in the UK so far but everyone who has returned from South Africa in the past 10 days will be contacted and asked to take a test. There are currently 13 direct flights a week from South Africa to the United States - Johannesburg and Cape Town are the only cities in the region from where it is possible to fly direct to the U.S. The 13 flights could hold around 3,900 people, if full. United Airlines currently fly direct from Johannesburg to New York City seven days a week, with the 16-hour flight leaving at 10pm and arriving at 7am in Newark. United also fly direct to New York City from Cape Town three times a week, on Monday, Thursday and Saturday. United flies Boeing 787-9 Dreamliners, which can hold 290 people. Delta fly direct from Johannesburg to Atlanta on Saturday, Monday, and Thursday. They use Airbus A350-900, which can seat between 300 and 350 people.



The UK and Israel on Thursday effectively stopped travel from Southern Africa, and some believe the US may follow suit. Flight ‘bans’ have been implemented before - although they are rarely an outright ban on a commercial flight from a country. Instead, they are stringent restrictions on who can fly, meaning that the airlines themselves cancel the routes because there are so few people who meet the requirements.

Donald Trump placed restrictions on travel from China to the U.S. in February 2020, and then the border between the U.S. and Canada was closed, and the U.S. and Mexico. This month Joe Biden ended 18 months of

restrictions placed on arrivals from the European Union, China, Iran, South Africa, Brazil and India, which had largely stopped travel between the countries. Some epidemiologists have argued that putting a travel ban in place for South Africa is counterproductive, because it punishes a country that has been transparent with its data. ‘Given how transmissible that the nu variant apparently is, I do not think that halting travel will ultimately be effective in preventing the variant from arriving,’ said Jay Bhattacharya, a professor of health policy at Stanford, whose recent research focuses on the epidemiology of COVID-19 as well as an evaluation of policy responses to the epidemic. He told DailyMail.com: ‘COVID is a global pandemic. No country can isolate itself forever, and halting travel imposes harm on the kind of international cooperation we will need to end the pandemic. ‘A better idea would be for the international community to provide sufficient vaccine supplies to the affected places.’ Others, such as Feigl-Ding, insist travel restrictions are necessary.



South African scientists, meanwhile, add that they are ‘concerned by the jump in evolution in this variant’. The variant has over 30 mutations - around twice as many as the Delta variant - which could potentially make it more transmissible and evade the protection given by prior infection or vaccination.

‘I’ve said before - I’m not always as concerned about these variants of concern, but this one, B.1.1.529, does concern me,’ said Marc Siegel, professor of medicine at the NYU Langone Medical Center, in an interview with Fox News.

COMMUNITY

‘It’s got 32 mutations in the spike protein, which is how the virus spreads. ‘And in the province around Johannesburg, there’s about 2,500 new cases over the past day, and they think — not proven yet — that this is the predominant variant.’ Siegel said that there were numerous reasons for concern. ‘It looks like it’s highly contagious,’ he said. ‘And that is what concerns me, because the other variants that have emerged haven’t had a chance against Delta because Delta is so contagious. ‘The other issue is, will the vaccine protect against this variant? Will the treatments protect against this variant? We’re keeping a really close eye on this one.’ The British expert whose modeling helped instigate the first coronavirus lockdown said that the decision to impose travel restrictions was ‘prudent’. Professor Neil Ferguson, a member of the British government’s Scientific Advisory Group for Emergencies (Sage), said: ‘The B.1.1.529 variant has an unprecedented number of mutations in the spike protein gene, the protein which is the target of most vaccines. ‘There is therefore a concern that this variant may have a greater potential to escape prior immunity than previous variants.



A healthcare worker collects a swab from Bronwen Cook for a PCR test against the coronavirus disease (COVID-19) before traveling to London, at O.R. Tambo International Airport in Johannesburg, South Africa, November 26, 2021.

‘It is also concerning that this variant appears to be driving a rapid increase in case numbers in South Africa. The Government’s move to restrict travel with South Africa is therefore prudent.

‘However, we do not yet have reliable estimates of the extent to which B.1.1.529 might be either more transmissible or more resistant to vaccines, so it is too early to be able to provide an evidence-based assessment of the risk it

poses.’ Experts from the UKHSA have been advising ministers on the issue, with a number of scientists expressing serious concern over the variant due to the significant number of mutations in the spike protein.

One senior scientist said: ‘One of our major worries is this virus spike protein is so dramatically different to the virus spike that was in the original Wuhan strain, and therefore in our vaccines, that it has a great cause of concern.’

Experts from the World Health Organization (WHO) are meeting with South African officials on Friday at 11:00 GMT to assess the evolving situation in the country.

The variant could eventually be given the moniker ‘Nu’ - with the most concerning variants given named after the Greek alphabet.

The variant is already in three countries, suggesting it is more widespread than the official tally.

Two cases have been detected in Hong Kong – both of whom had links to South Africa – three have been picked up in Botswana and the remainder are in South Africa.

But a lack of surveillance on continental Africa may be underestimating the true numbers there, scientists warned.

Professor Tulio de Oliveira, a director of COVID surveillance in the South African province of KwaZulu-Natal, told a press conference on Thursday that it has been spotted in nearly every corner of South Africa.



A baby cries as her mother receives her Pfizer vaccine against COVID-19, in Diepsloot Township near Johannesburg, South Africa on October 21.

He admitted he was still ‘uncertain’ about the impact of the variant on the country’s epidemic, with other scientists saying that it might be so evolved that it becomes unstable.

But Professor Oliveria explained the new variant is ‘clearly very different’ from previous strains, including the fact that it has five times more mutations on

a specific part of the spike protein than Delta — meaning it might be better at infecting vaccinated people than the world-dominant strain.

He said that officials ‘do expect, unfortunately, to start seeing pressure in the healthcare system in the next few days and weeks.’

Joe Phaahlam, South Africa’s Health Minister, warned at the same press conference: ‘Here is a mutation variant of serious concern.’

He added: ‘We were hopeful that we might have a longer break in between waves - possibly that it would hold off to late December or even next year January.’

Current jabs train the immune system to recognize an older version of the spike, and lots of changes to this protein make it harder for the vaccinated people to fight it off.

What Impact Might B.1.1.529 Have On Vaccines?

Scientists have raised concern that the super Botswana Covid variant may be better able to dodge vaccine-induced immunity than all previous strains — including Delta. UK Health Security Agency scientists say it is the ‘worst ever’. It combines mutations previously seen on the Beta variant, which sparked concern last year as it was thought to be more vaccine resistant, and those on the more transmissible Alpha strain that was behind the second wave.

Scientists warn it is ‘plausible’ that the mutant variant is spreading quickly because it is better able to infect people who have immunity either from vaccines or previous infection.



In South Africa where it is spreading most people already have immunity from previous infection. Some 40 per cent have also received two doses of the Covid jab. But despite the concern lab tests are yet to confirm that the variant is better able to dodge vaccine-triggered immunity than other mutant strains. Very little is known about its virulence and whether someone who catches the mutant strain is more likely to end up in hospital or dying from the disease. (Courtesy <https://www.dailymail.co.uk/>)

H Mart 台灣食品節廣受好評，休斯頓店至12/9為止

近百款台灣人氣美食，購物滿額還有贈品派發！



(本報休斯頓報導) 廣受好評，H Mart超市今年再度舉行「臺灣食品節」，活動已於11月26日開始在休斯頓熱情上場，H Mart誠摯邀請民衆，一同來品嚐道地的寶島風味，雖然人在德州，也能享受最道地的臺灣美食!快來H Mart，為自己與身邊的親朋好友，挑選來自臺灣、最貼心的禮物吧!

H Mart表示，今年的「臺灣味，滿足您的臺灣胃!」推出多款臺灣當地傳統的美食、人氣特產、甜點等等。獨家特集近百款臺灣人氣商品，由平價商品到只能在臺灣才買到的最受歡迎伴手禮，這次食品節都有!

此次「臺灣食品節」展銷的地方特產品包括臺灣金錦町土鳳梨酥、金箔蜂蜜蛋糕、鱸活一號深海龍虎斑、阿聰師貢貢香烘焙芋頭條、阿聰師小芋仔、果時製研所零添加果乾、奕順軒三星蔥蛋捲、小琉球必買-王老師手工麻花捲、萬丹椒朋友香麻辣醬、桃城雞排臺式雞排調理懶人包、師園蒜味鹽酥雞脆片、馬祖老酒麵線等正宗臺灣食品。

這次臺灣食品節，H Mart想挑戰讓大家在美國就可以吃到臺灣水準的味道，第一個要推薦的就是來自屏東的鱸活一號，從1986年就專精於養殖，生產優質漁業產品。除了友善環境，也保證絕

對不使用化學添加劑，吃起來也沒有土味或腥味，鱸活一號深海龍虎斑，肉質鮮美緊實，天然的鮮香肉質，絕對是餐桌上的美味擔當!鱸活一號的龍虎斑都是已經處理好，可以馬上料理或是馬上上菜，超級方便。

阿聰師是臺灣芋頭酥之父，已經有著六十幾年的歷史。小芋仔是阿聰師的招牌商品，外表超級討喜，就是微頭微尾的小芋頭，軟糯香甜，好吃的停不下來。

每年的臺灣食品節，H Mart都介紹臺灣不同的「鳳梨酥」給大家，今年推薦的是《日出宮原眼科》土鳳梨酥、《金錦町》土鳳梨酥(土鳳梨酥就是只用鳳梨沒有用冬瓜)。《日出宮原眼科》

土鳳梨酥有著跟平常鳳梨酥不同的外表，內餡酸中帶甜還不膩!《金錦町》的鳳梨酥用碎雪金箔點綴，不只外表好看，土鳳梨的酸甜跟金鑽鳳梨的甜達到完美的平衡，完全是對得起外表的美味。

《金錦町》手工蜂蜜蛋糕也很值得一試!有「原味」及「抹茶」兩種口味。《金錦町》手工蜂蜜蛋糕(抹茶)以日式五三燒黃金比例工法手工製成，在金黃香濃的蜂蜜蛋糕中，注入溫潤厚實的抹茶抹醬和抹茶粉，讓鮮明的金黃蛋糕體瞬間轉為翠綠，入口帶有抹茶高雅的清香，在口中融化的瞬間，蜜香與抹茶香在口中交織出苦甜雅緻的滋味，豐富口感上的層次享受。

果時製研所的零添加果乾，是水果

也是零嘴!限量上市，有「草莓」、「情人果」、及「火龍果」三種口味，嚴選頂級水果，100%無添加、無加糖健康選擇。專利低溫乾燥，保留完整養分，單吃就好好吃，而且吃得超安心，因為每一年果時製研所都會自主送驗，確保好滋味又吃得安心。單吃可以解嘴饞，有時候也可泡在泡水里喝。採最高標準製作流程，無糖無添加產品雙認證，堅持低溫慢速烘乾，保證無人工添加物。

「H Mart臺灣食品節2021」專屬禮遇：推廣期間，於H Mart指定活動分店，憑發票消費「H Mart臺灣食品節2021」推廣產品淨額滿\$100刀或以上，可獲贈阿啞夜市環保袋一件*(贈品數量有限，送完為止)。

創立於1982年的美國亞洲超市品牌H Mart，引領全新型態的食品生活體驗店，為美國消費者提供來自亞洲各地最優質的商品，目前的分店橫跨美國14個州，是全美最具規模和影響力的領先亞洲超市品牌之一。

H Mart集團看準亞裔市場的

消費力，此次特別與臺灣經濟部中小企業處、OTOP(One Town One Product)及財團法人中衛發展中心合作，引進臺灣特色食品，期望能以舒適購物環境，多樣獨特商品種類，打造全新購物體驗。

更多活動信息及活動店鋪信息請見H Mart官網、臉書、Instagram及微信公眾號(ID: hmartofficial)。

關於H Mart

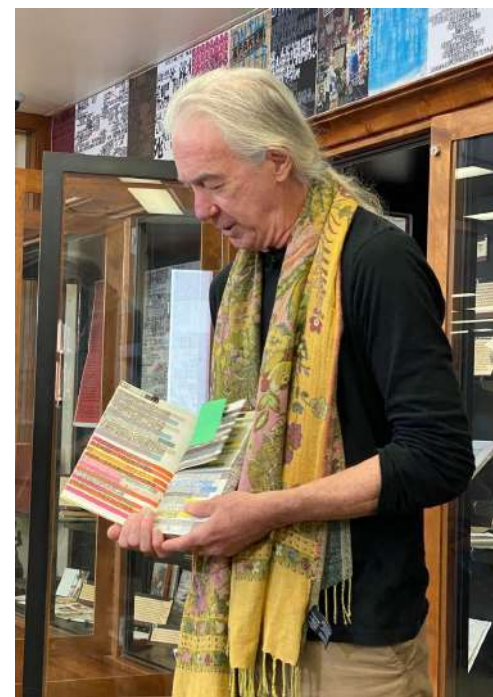
H Mart集團為北美最大之亞洲食品零售連鎖超市集團，從1982年在紐約皇后區開設第一家店以來，目前已有超過90間分店。



H Mart 為北美地區提供了齊全的亞洲食品以及各種西方生活用品，有別於一般傳統超市，H Mart還以其超市內的美食廣場而聞名，這對經營了三十多年的超市來說，是一大創新。

H Mart 被全國零售聯合會(National Retail Federation) 排名為發展最快的零售商之一(排名第13)。超市新聞(Supermarket News) 將H Mart列為美國及加拿大前50大的連鎖店之一。

「臺灣文學翻譯展」於美國奧克拉荷馬大學展開



翻譯家柏艾格(Steve Bradbury)演講

(本報訊)「奧克拉荷馬大學—臺灣文學翻譯展暨講座」11月23日於奧大華語文學翻譯檔案館(Chinese Literature Translation Archive)開展，並邀曾翻譯數百件臺灣詩作之翻譯家柏艾格(Steve Bradbury)演講，展覽為期一年。

本次展覽由駐休斯頓辦事處臺灣書院、文化部、奧大圖書館合作辦理，特別展出奧大收藏之臺灣詩人葉維廉作品及翻譯家柏艾格20年來所收藏、翻譯之臺灣詩人作品，包括鴻鴻、夏宇、阿芒、葉真真等。從展出之英譯詩集與翻譯手稿，可看出臺灣現代詩創作與發展之多樣性。其他展品包括已絕版之現代詩刊《現在詩》第五期「大字報」原件，該期雜誌採用一系列九張華麗的全彩牆海報，既可作為詩集閱讀，亦為對詩作之美的頌揚。另展出「詩歌日曆」、「出奇蛋裡的詩歌」和「火柴盒中的詩歌」等新穎的現代詩的呈現形式。

策展人石江山(Jonathan Stalling)教授和翻譯家柏艾格並為展覽創作一系列獨特的標題，深入探討作品的歷史及譯者對譯作的反思。柏艾格以「20世紀末至21世紀初臺灣詩學與內容取材的文化變遷」為題，從西方觀點分享臺灣詩人詩集之藝術性與創意表現，他以夏宇的詩集為例，說明其作品已跳脫書的框架，成為藝術收藏品。

石教授為奧大華語文學翻譯檔案館長暨策展人，亦為該校《今日華文文學》(Chinese Literature Today)季刊主編，曾主編2018年出版的《臺灣女性作家短篇小說選》英文本。柏艾格曾任中央大學英語系副教授，其為美國文學翻譯家協會(American Literature Translation Association)長期會員，與臺灣詩人阿芒合作之英文詩選及翻譯對話集《Raised by Wolves》今年4月獲美國筆會翻譯詩集獎。



(左起)翻譯家柏艾格(Steve Bradbury)與策展人石江山教授(Jonathan Stalling)

僑聯總會美南辦事處主任李迎霞暨菲律賓教會 12月4日發放食物給弱勢家庭，歡迎中國城僑胞參加

僑聯總會美南辦事處主任李迎霞贊助菲律賓教會。將於12月4日上午七點半至十點半，在5800 Ranchester office building parking lot(即賴清陽大律師辦公大樓的教會)，大家一起發放食物給需要幫助的弱勢家庭，並預祝大家有個溫馨的聖誕。李迎霞希望在中國城附近居住的僑胞也能開車來領取食物。能夠為社區服務，幫助需要幫助的朋友，讓愛心滿人間。

圖文：秦鴻鈞



台灣加油日 為東京奧運銅牌得主鄭怡靜加油打氣

(本報訊)11/26/2021 是台灣加油日我們全程參與並和中華隊東京奧運銅牌得主鄭怡靜合照留念為她加油打氣!賴律師還答對最後一個題目中華乒乓球隊誰是最大贊助商，「合作金庫」他的獎品是首場出賽新加坡隊旗開得勝的劉聲尹的簽名乒乓球和處長合照留念!

